

Coastal Risk Management A Local Authority Approach

Peter Frew
Head of Coastal Strategy
North Norfolk District Council
LANDFORM 2009

Coastal Risk Management

- **Context**
- **Case studies**
- **Observations**

Context

- Eroding coast



Trimingham 2001

Context

- Eroding coast
- **Small villages**



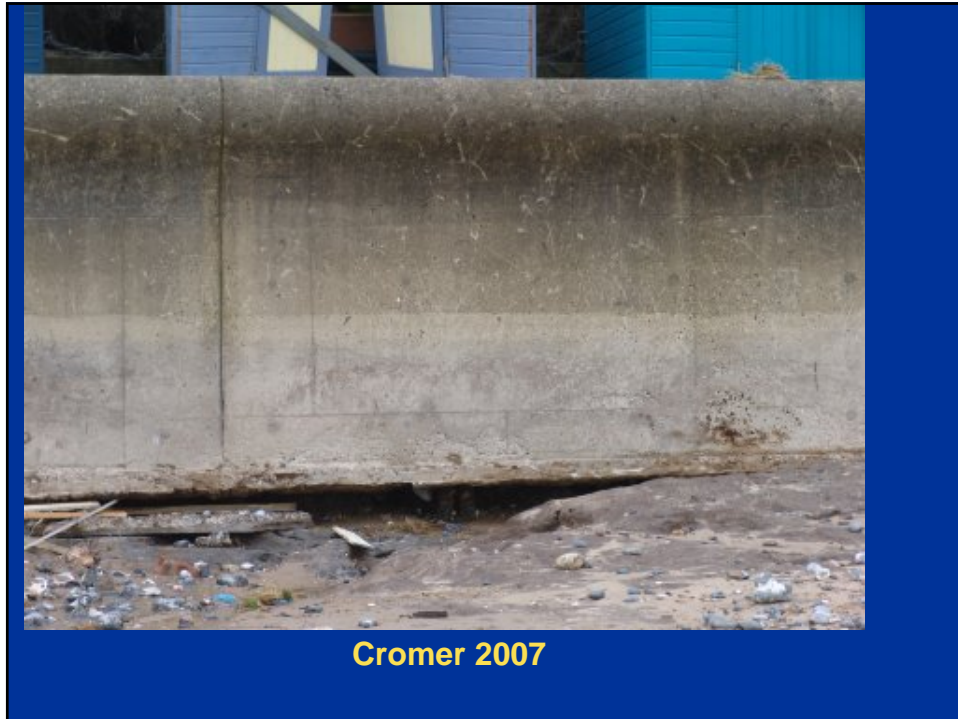
Trimingham 2007

Context

- Eroding coast
- Small villages
- **Lack of investment in defences**



Cromer 2007



Actions taken by the Council

- **Buying time**

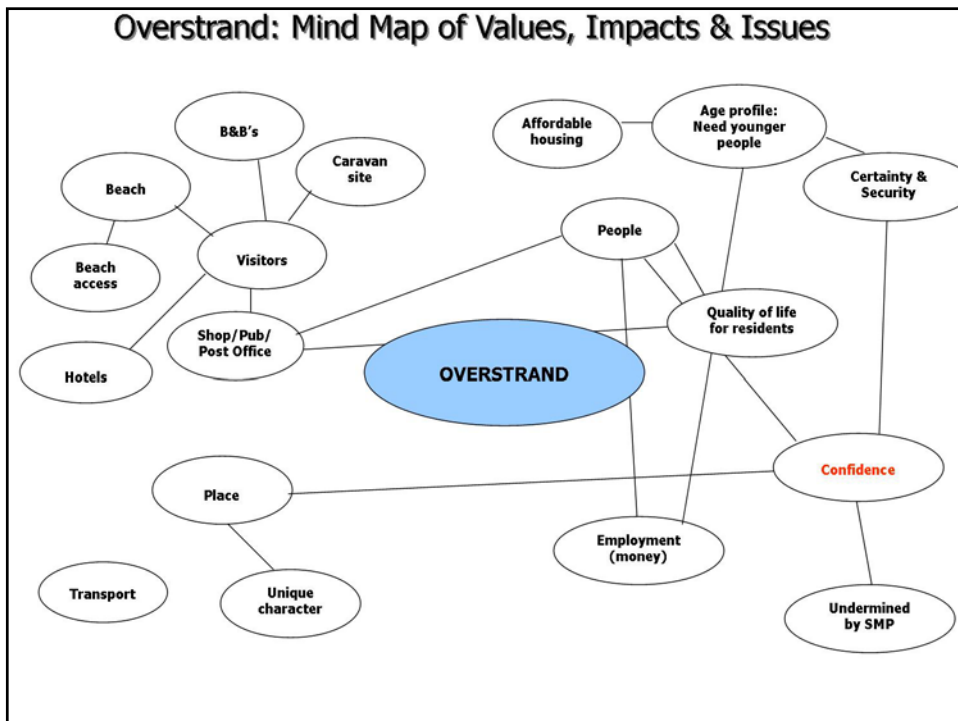


Actions taken by the Council

- Buying time
- **Local Development Framework**
– **Development Guide**

Actions taken by the Council

- Buying time
- Local Development Framework
– Development Guide
- **Community vision**



Direction

Dissatisfaction + Vision + First steps > Resistance



Fear of staying the same > fear of change

What do we want?

Gradual change.



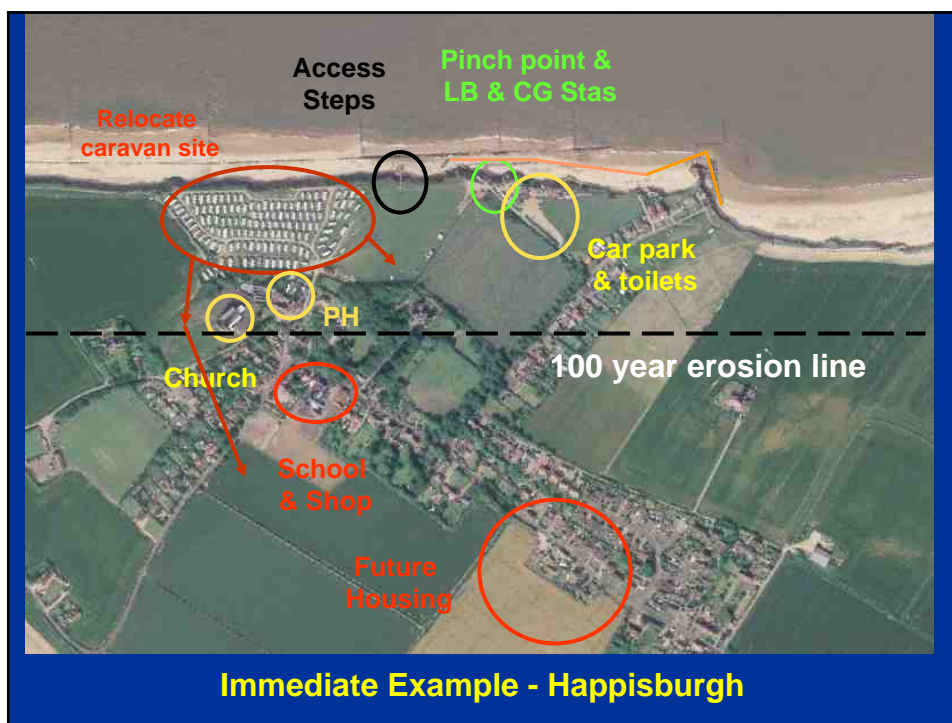
When do we want it?

In due course.....

Case studies -1
Immediate - Happisburgh
– Epochs 1 to 3 : No Active Intervention

**Happisburgh Drivers and
Actions**

- **Drivers**
 - Loss of Beach
Access
 - Car park
 - Toilets
 - Houses
 - Pub
 - Church
 - LB & CG Stas
 - Caravan site
 - Blight



Happisburgh Drivers and Actions

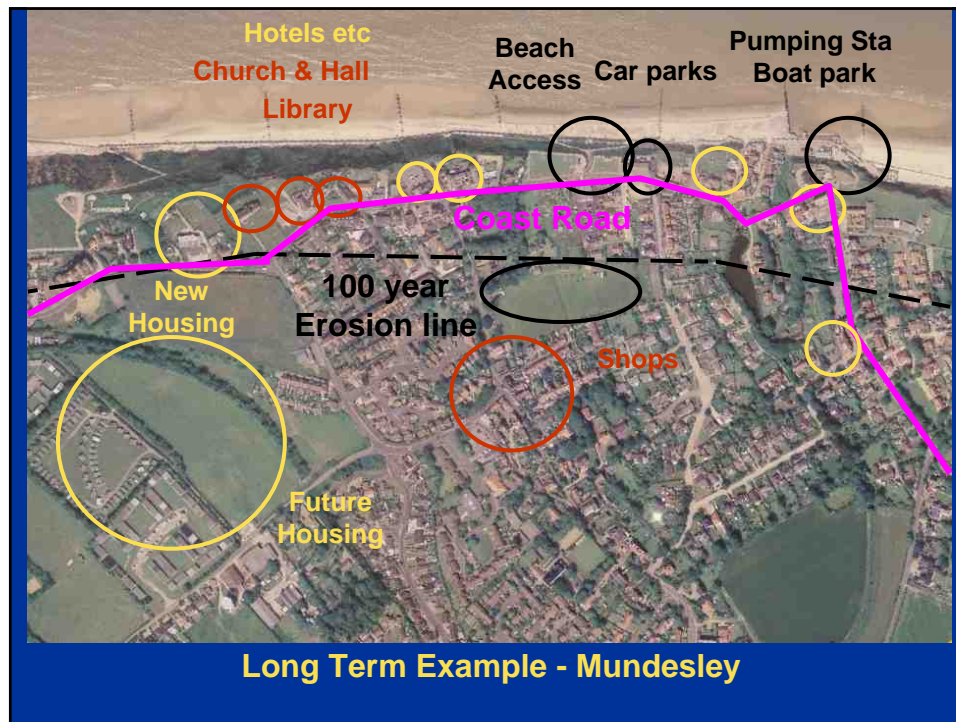
<ul style="list-style-type: none">• Drivers<ul style="list-style-type: none">– Loss of Beach Access– Car park– Toilets– Houses– Pub– Church– LB & CG Stas– Caravan site– Blight	<ul style="list-style-type: none">• Actions<ul style="list-style-type: none">– New access– Temporary defences– Local workshops– Identify risk free development sites– Remove dereliction– Lobbying– Develop action plan
---	---

Case studies -2 Long Term - Mundesley

- Epochs 1 & 2: Hold the Line
- Epoch 3: Managed Realignment

Mundesley Drivers and Actions

- **Drivers**
 - Beach Accesses
 - Coast Road
 - Car park & toilets
 - Hotels, pubs & clubs
 - Church, graveyard village hall & library
 - Sewage Pumping Station
 - Houses
 - Cafés
 - LB Station
 - Blight



Mundesley Drivers and Actions

- **Drivers**
 - Accesses
 - Coast Road
 - Car park & toilets
 - Hotels, pubs & clubs
 - Church, graveyard village hall & library
 - Sewage Pumping Station
 - Houses
 - Cafés
 - LB Station
 - Blight
- **Actions**
 - Enforce development restrictions
 - Identify risk free development sites
 - Invest in defences
 - Local workshops
 - Develop action plan

Observations

- **No quick fixes**

Observations

- No quick fixes
- **Involving the community generates ideas**

Observations

- No quick fixes
- Involving the community generates ideas
- **But doing something gives confidence**

Observations

- No quick fixes
- Involving the community generates ideas
- But doing something gives confidence
- **Each site is unique needing different approaches over varying timescales**

Observations

- No quick fixes
- Involving the community generates ideas
- But doing something gives confidence
- Each site is unique needing different approaches over varying timescales
- **Each LA adopting different approach**

Observations

- No quick fixes
- Involving the community generates ideas
- But doing something gives confidence
- Each site is unique needing different approaches over varying timescales
- Each LA adopting different approach
- **National framework needed**