

DELIVERING SUSTAINABLE DRAINAGE &
PERMEABLE SURFACES

BARRY WEST
HIGHWAYS ADOPTION OFFICER
OXFORDSHIRE COUNTY COUNCIL

**WHY IT MAKES SENSE FOR A LOCAL
AUTHORITY**

WELL

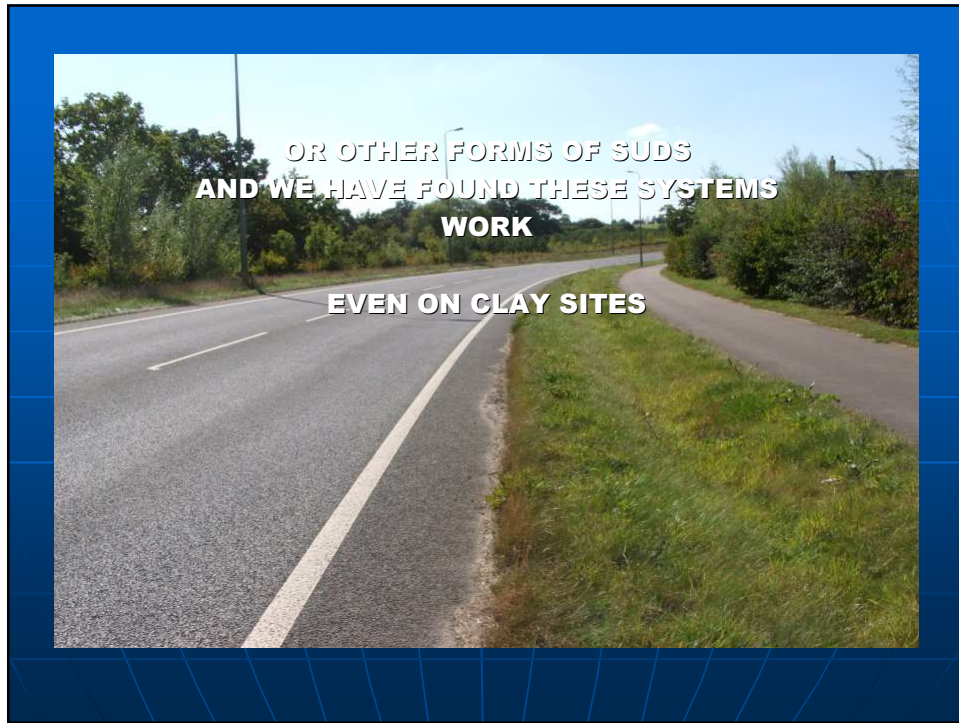
- **OXFORDSHIRE LIKE MOST OF THE COUNTRY SUFFERED FLOODING IN JULY 2007.**
- **WE ALSO HAD FURTHER FLOODING THIS YEAR IN JANUARY / FEBRUARY 2008**
- **ALSO IN JUNE**



NONE OF THE DEVELOPMENTS THAT HAVE PERMEABLE SURFACES DID NOT FLOOD

THEY COPE WITH THE RAIN FALL

THIS MAKES REAL SENSE FOR THE COUNTY OFFICES COUNCILLORS AND THE PEOPLE WHO LIVE ON THESE DEVELOPMENTS



- **HOW DID OXFORDSHIRE COME TO THIS**
- **TEN/TWELVE YEARS AGO WITH HELP AND UNDERSTANDING OF THE LOCAL PLANNING AUTHORITIES WE SET UP DESIGN TEAM FOR MAJOR PROJECTS**
- **IT HELPED THAT LPA APPOINTED MAJOR DEVELOPMENT OFFICERS**
- **AND THAT THE DRAINAGE OFFICER AND THE ADOPTIONS OFFICER FOR THE HIGHWAY AUTHORITY STAYED THE SAME**

- **THE DESIGN TEAM CONSISTS OF THE LOCAL PLANNING AUTHORITY**
- **THE DEVELOPERS**
- **THE HIGHWAY AUTHORITY**
- **THE ENVIRONMENT AGENCY**
- **LANDSCAPE ARCHITECTS**
- **STREET LIGHTING**
- **AND ALL OTHER STAKEHOLDERS**
- **SMALL DEVELOPMENTS THE HIGHWAY AUTHORITY STAFF WORK WITH THE LOCAL PLANNERS AND CAN CALL ON THE SPECIALIST TO PROVIDE INFORMATION AND DESIGN HELP**

- **THE DESIGN TEAM WORK ON ASPECTS OF MASTER PLANNING AND DESIGN CODES**
- **THE TEAM BEGIN TO UNDERSTAND WHAT EACH STAKEHOLDER IS TRYING ACHEIVE IN THE DEVELOPMENT**
- **SAT AROUND A TABLE COMPROMISES CAN BE ACHEIVED THAT SUIT ALL**

- **IT IS DURING THESE DESIGN MEETINGS THAT THE NEED FOR COMMUTED SUMS FOR FUTURE MAINTENANCE CAN EXPLAINED TO THE DEVELOPER**
- **THE OXFORDSHIRE COMMUTED SUM REQUIREMENT IS VERY SIMILAR TO THE GUIDANCE BEING PRODUCED FOR THE DfT (WHICH SHOULD BE ISSUED 2009).**
- **THE FORMULA USED TO PRODUCE THE SUM IS AGAIN CLOSE TO THE PROPOSED DfT**
- **IT TAKES INTO ACCOUNT INTEREST AND DEPRECIATION**
- **AND THAT SUCH PAYMENTS ARE LEGAL**

- **IN THE BEGINNING WE HAD TO WORK HARD WITH THE DEVELOPERS AND THEIR CONSULTANTS TO UNDERSTAND WHAT WE WERE TRYING TO ACHIEVE**
- **AND THAT COST LOWER THAN TRADITIONAL METHODS OF SURFACE WATER DISPOSAL**

**WE HAVE HAD PROBLEMS
BUT WITH TRAINING WE HAVE OVERCOME THESE**



- **THE PITT REPORT JUST REINFORCED WHAT WE HAD BEEN DOING AND ACHEIVING**
- **OCC HAVE RECOMMENDED THAT THE WATER AUTHORITIES DO HAVE RESPONSIBILITIES FOR SURFACE WATER.**
- **THE STRUCTURE SHOULD BE THE ENVIRONMENT AGENCY AND THEN DOWN TO THE HIGHWAY AUTHORITY**
- **DURING THE SUMMER DEFRA VISITED OXFORDSHIRE TO LOOK AT WHAT HAD BEEN ACHEIVED AND WE HAD A CHANCE TO PUT THIS STRUCTURE FORWARD**

Site	Size	Suds System		
		Swales Pavement	Ponds	Porous
Madley Park Witney	200	✓		✓
Shilton Park Carterton	2500	✓		✓
Oxford Road, Kingston Bagpuize- 2sites	40			✓
Rectory Lane, Kinston Bagpuize- 2sites	40	✓	✓	
Orchard Close, Standlake	10			✓
Penlon, Abingdon	80			✓
Northcourt Road, Abingdon	25			✓
Bicester Fields, Bicester	200	✓		
Hanwell field, Banbury	1500	✓	✓	✓

Site	Size	Suds System		
		Swales	Ponds	Porous Pavement
Madley Park Witney	200	✓		✓
Shilton Park Carterton	2500	✓		✓
Oxford Road, Kingston Bagpuize- 2sites	40			✓
Rectory Lane, Kinston Bagpuize- 2sites	40	✓	✓	
Orchard Close, Standlake	10			✓
Penlon, Abingdon	80			✓
Northcourt Road, Abingdon	25			✓
Bicester Fields, Bicester	200	✓		
Hanwell field, Banbury	1500	✓	✓	✓

Colborn Road, Didcot	10			✓
Barton Garage Drayton	20			✓
Ducklington Mill, Ducklington	20			✓
Arkwell Ave, Carterton	15			✓
Murcott Road, Amcott	25			✓
Lincoln Grove, Baldon	10			✓
Ingelby Farm, Bletchington	10			✓
Ticknells Piece, Charlbury	15			✓
Oakley Road, Chinnor	25			✓
Station Road, Chinnor	32			✓
London Road, Chipping Norton				✓
Foxfield, Chipping Norton	10			✓

Papist Way, Cholesey	15			✓
Acke End Street, Eynsham	10			✓
Merton Close, Eynsham	40			✓
Potts Close, Great Milton	10			✓
Stainwick Lane, Shrivenham	15			✓
The Wickets, Standlake	12			✓
Tapins Yard, Watlington	25			✓
Britwell Road, Watlington	20			✓
Mortland Road, Witney	18			✓

LARGE DEVELOPMENTS IN THE PIPELINE

SW Bicester, Bicester	1800	✓	✓	✓
Airfield, Grove	2000	✓	✓	✓
Great Western Park	3200	✓	✓	✓



- **THE KINGSMERE DEVELOPMENT HAS BEEN DESIGNED TO HAVE NP PUBLIC SURFACE WATER SEWERS**
- **SURFACE WATER IS DISPOSED BY A FULL RANGE OF SUDS SYSTEMS**
- **THERE WILL ALSO BE AN OVERLAND FLOOD ROUTE JUST IN CASE**
- **THE SURFACE WATER DRAINAGE HAS BEEN EMCOMPASSED IN THE DESIGN CODE APPROVED BY CHERWELL DISTRICT COUNCIL AND IS A MANDATORY ELEMENT OF THAT CODE**

- **BECAUSE THERE WILL BE NO PUBLIC SURFACE WATER SEWERS THE ADOPTION OF THE ROADS WILL BE LESS TIME CONSUMING – WE WILL NOT HAVE TO WAIT FOR THE SEWERS TO BE ADOPTED OR PLACED ON MAINTENANCE**
- **OXFORDSHIRE ARE NOW LOOKING TO INCORPORATE RAINWATER GARDENS BOTH FOR NEW DEVELOPMENTS AND EXISTING ROADS**

- **WE CAN ALL ACHIEVE SUCCESS WITH SUDS YOU JUST HAVE TO BE BOLD IN YOUR THINKING**
- **IF UNSURE GO BACK TO FIRST PRINCIPLES DO NOT OVER ENGINEER**