

Constraints on SuDS use

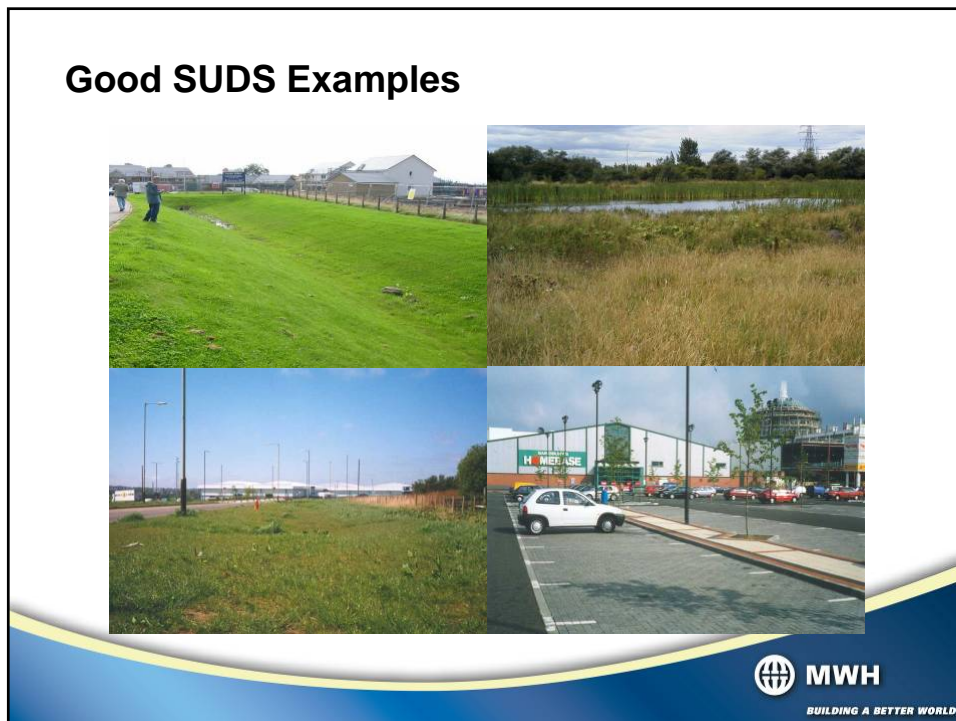
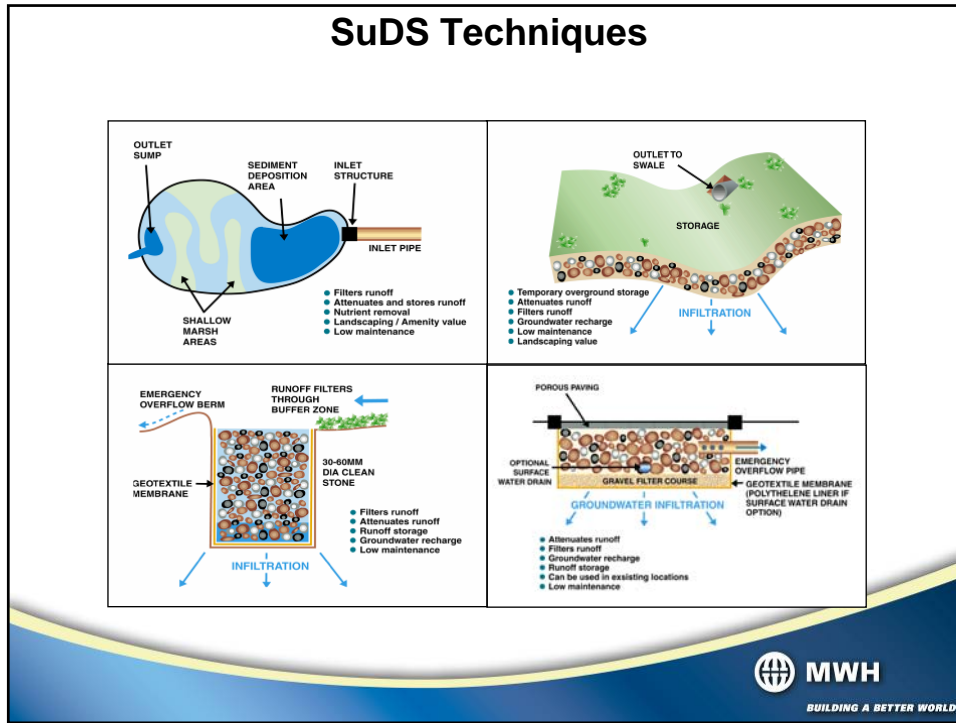
- The use of SuDS may be limited where:
 - the soil is not very permeable
 - the water table is shallow
 - the groundwater under the site may be put at risk; or
 - infiltration of water into the ground, particularly if concentrated in a limited area, could adversely affect ground stability



SuDS Feasibility Checklist

- Ground conditions
- Historical land use
- Hydrology
- Hydrogeology
- Topography
- Ecology
- Boreholes
- Contaminants present in runoff
- Size of the catchment area
- Type of development
- Buildability





Good SUDS Examples



Why don't we use SUDS?

- lack of experience?
- lack of guidance?
- Maintenance?
 - swales can be included in the grass cutting schedule
 - ponds may require occasional cutting back of dead plants, replanting or cleaning
- groundwater protection concerns?
- long term performance concerns?
- Cost?
- safety concerns?
- ownership / adoption?

- **Contact Details:**

- **Steve Dickie**

- **Telephone 0191 261 5588**

- **Email steve.dickie@mwhglobal.com**

