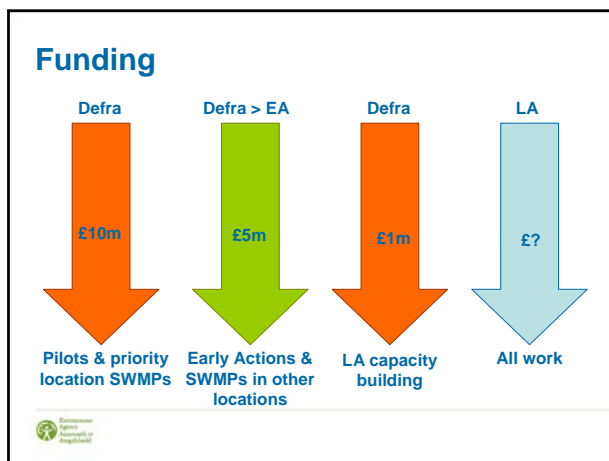
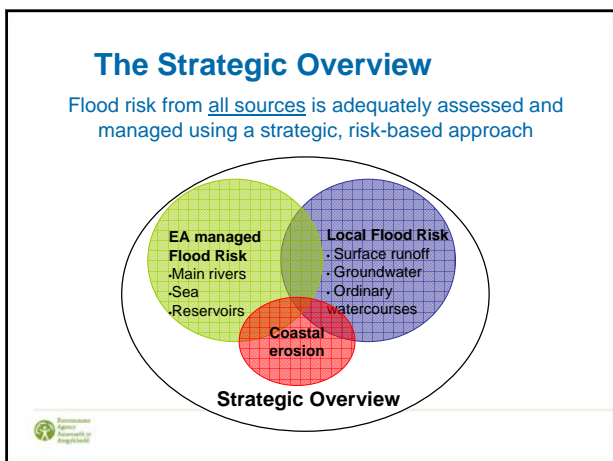
 Environment Agency

## Landform: Early Action Funding

Jonathan Hunter – Environment Agency  
Landform Seminar  
17 January 2011

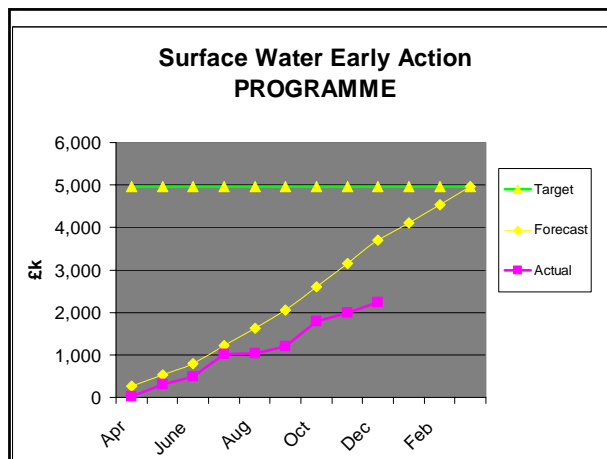
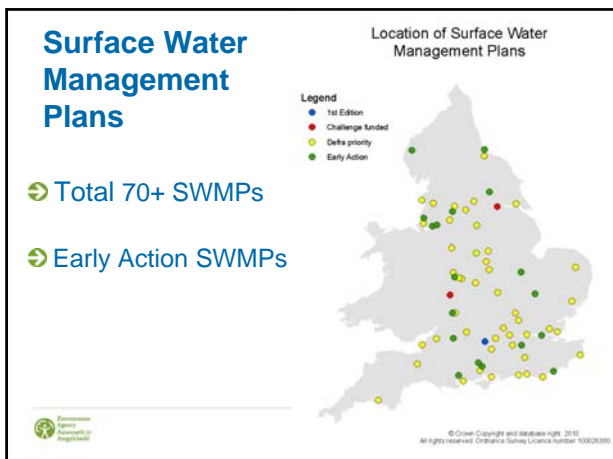


- ### Short-listing
- ⇒ Decisions based upon info in application form
  - ⇒ Bids divided into actions and SWMPs
  - ⇒ Risk based approach & value for money
  - ⇒ Qualitative weighting of secondary criteria: rural, partnership, wider benefits, other plans, innovative, delivery
  - ⇒ Locations already awarded SWMP funding given less weight

### Early Actions

- ⇒ SUDS
- ⇒ Highways
- ⇒ Rural

Location of Early Action Engineering solutions



- ### Future
- Flood & Water Management Act / Regulations
  - National & Local Strategies
  - Defra Future Funding consultation
  - Localism
  - Skills & Capacity

- ### Skills Strategy – Tools & Data
- New tools and data to support LLFAs
    - New LIDAR - for all urban areas >3km<sup>2</sup>
    - Climate change information for PFRAs and Local Strategies
    - SUDS Greenfield runoff tool
    - Groundwater hazard mapping
  - Timescales – March 2011



- ### Skills Strategy – Tools & Data
- New tools and data to support LLFAs
    - New LIDAR - for all urban areas >3km<sup>2</sup>
    - Climate change information for PFRAs and Local Strategies
    - SUDS Greenfield runoff tool
    - Groundwater hazard mapping
  - Timescales – March 2011

