

Flood & Water Management: Partnership Arrangements in Greater Manchester

Dr Garreth Bruff
Policy Manager

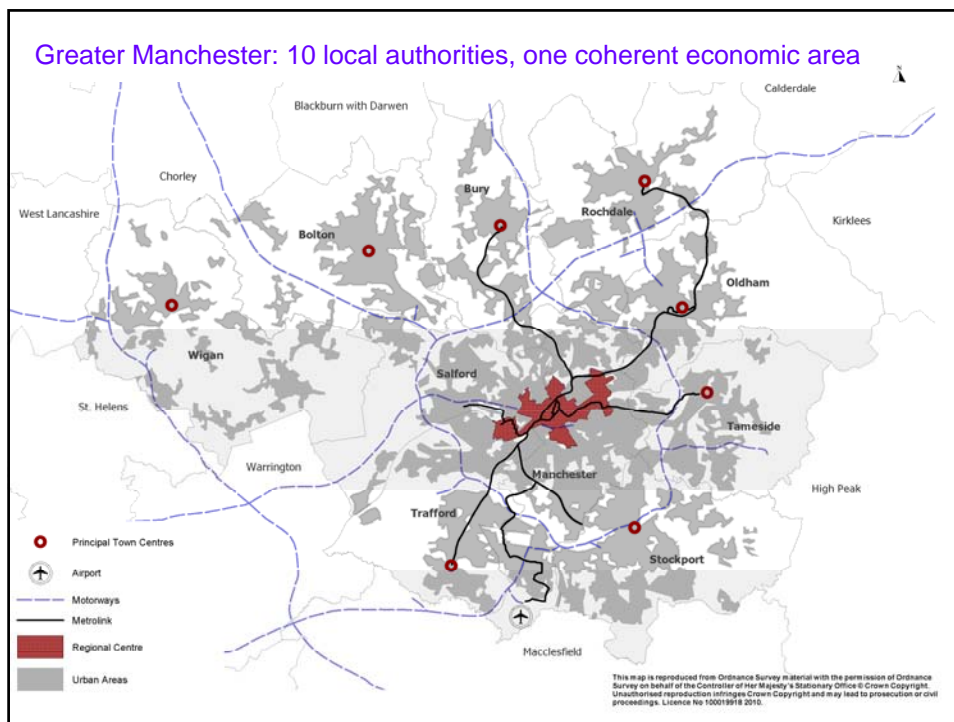
Andrew Cameron
Interim Flood & Water Management Programme Manager



Overview

- GM governance and economic context
- Strategic and operational approach to managing flood risk
- Achievements to date
- Ambitions for future





Greater Manchester Governance

Greater Manchester has a long history of collaborative working which has recently been strengthened:

- AGMA Executive – Joint Board providing focus for voluntary co-ordination
- Joint bodies: GM Police, Fire Authority, Waste Authority and now, Transport for Greater Manchester
- Supported by AGMA Commissions
- Advised by GM Business Leadership Council
- GMCA – established 1st April 2011
- Greater Manchester LEP – platform to deepen private sector engagement



Greater Manchester Strategy

Contains 11 Strategic Priority areas:

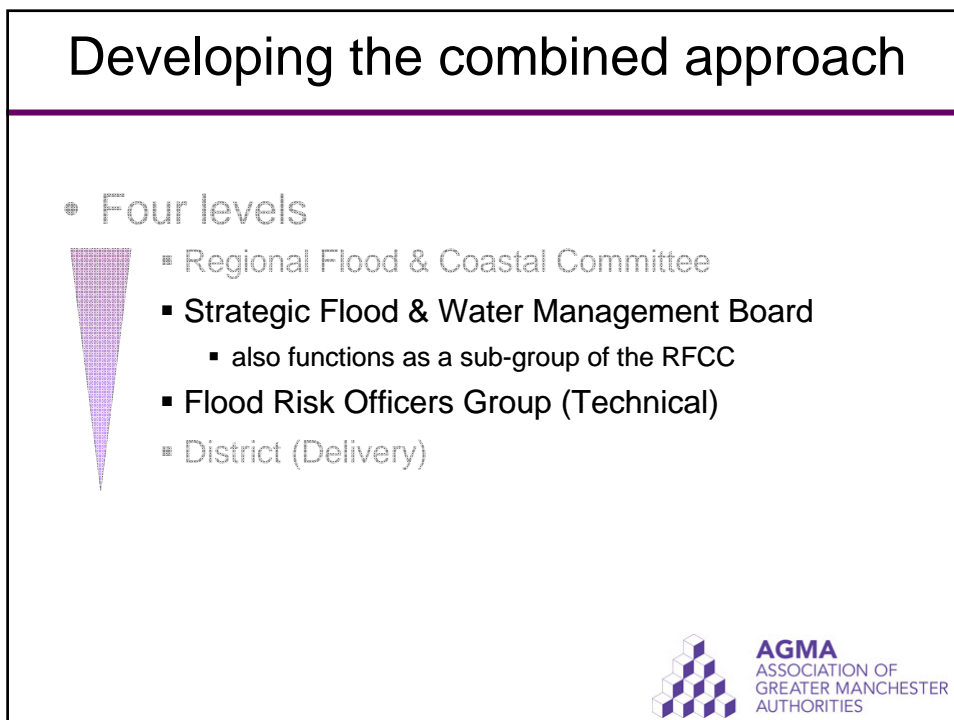
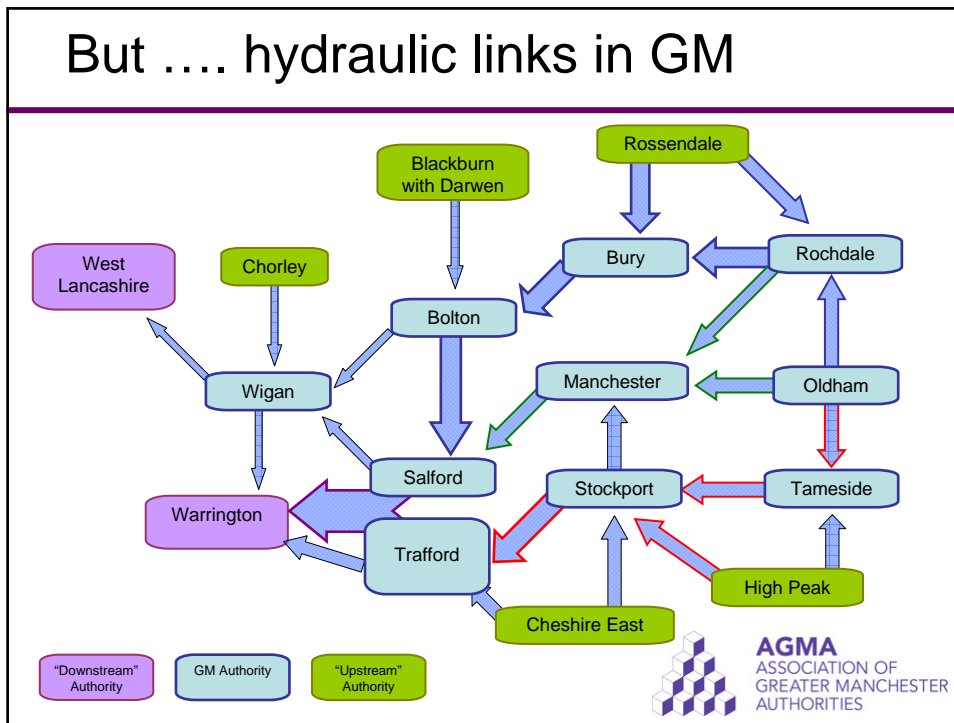
- Focus on early years to maximise impact of interventions
- Better life chances in the most deprived areas
- Increase the proportion of highly skilled people
- Attract, retain and nurture the best talent
- Significantly improve transport
- Expand and diversify economic base
- Increase international connectivity of our firms
- Securing the transition to a low carbon economy
- Creating quality places to meet the needs of a competitive city region
- Delivering more effective governance
- Building a sense of place

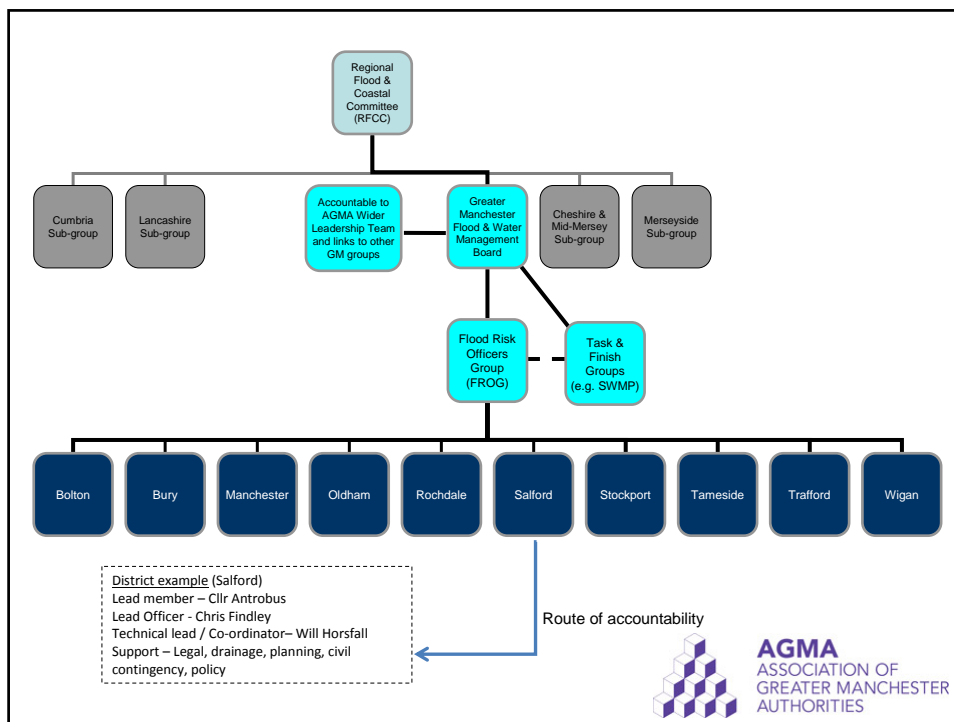


Key GM Priorities:

- **GMS overall vision** – new model of sustainable economic growth which ensures residents and businesses benefit from and contribute to growth
- **Economic growth** – developing and sustaining the necessary capacity to secure investment and grow GM's economic base in a sustainable way
- **Public service reform** – deliver transformation in the way public services are delivered to reduce dependency and increase active participation in the economy







Achievements

- Capacity Building
- Greater Manchester SWMP
- PFRA
- Opportunities to “do it once”
 - Investigations Policy
- Strategic Board Work Programme



Benefits

- SuDS/SAB Working Group
- Consistency between LLFAs
- Engagement with partners
- Economies of scale



The work continues...

- Building working relationships
- Developing new relationships
- Linking to adjacent LLFAs
- Funding & investment opportunities
 - 'earn back'

