

## **Partnering with your supply chain to improve resource efficiency**

**Bruce Goldring, AMEC Buildings & Facilities  
Services**

**Dr David Vaughan, Envirowise**

## **What is a Supply Chain Partnership?**

**David Vaughan  
Construction Programme team Leader  
Envirowise**

## SCP 'Definition'

An initiative to improve business efficiency through greater cooperation between companies and their suppliers

- Business efficiency:
  - Supply chain integrity
  - Competitive position
  - Rationalisation of supplier base
- Cooperation:
  - Mutual benefits
  - Trust
  - Sharing information
  - Joined up thinking
  - Consistency

## SCPs In Context

An initiative to improve resource efficiency, minimise waste and maximise savings through adopting best practices

- Resource Efficiency:
  - Materials
  - Procurement
  - Logistics and Utilisation
- Waste Minimisation:
  - Reduce
  - Reuse
  - Recycle

## Key Facts and Figures

- ~420 million tonnes of resources used per year
- ~ 90 million tonnes of CD&E waste produced per year
- 10-30% wastage rates
- 26% of waste can be packaging
- Void space of 40% in skips
- £200 million on landfill tax

## Experience

- Retail therapy
- AMEC & CIRIA
- Considerable interest

**RETAIL THERAPY**  
REDUCING WASTE THROUGH SUPPLY  
CHAIN PARTNERSHIPS



## Construction Partnerships

- Clients:
  - Construction companies
  - Product suppliers
- Lead Construction Companies:
  - Suppliers
  - Sub-contractors
- Lead Suppliers
  - Product manufacturers
  - Product users

## How it works

- Assessment of current knowledge and practice
- Engaging with the chain
- Targeted advice and support
- Site visits
- Impact assessment

Book a **free** &  
on-site survey  
save **£1,000s**



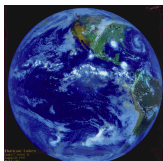
## **AMEC Business benefits of Supply Chain Partnership Environmental Performance Improvement Club - EPIC**

**Bruce Goldring  
SHE Adviser  
AMEC**

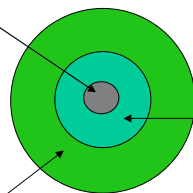
## **Business Driver Sustainable Development Triple bottom line**

Profit - £

People



Planet



## Profit



- The efficiency of any business measured by the amount of waste generated.
- The construction industry contributes 8% Gross domestic product (GDP) - £77 billion turnover
- The construction industry produces 80mt waste per annum
- Of which 10% is unused material

## People

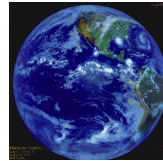
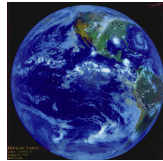
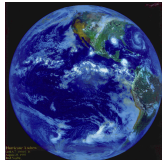


- Social responsibility for repeat/ long term contracts
- Raise the profile of the industry to recruit new people
- Incentives needed for all parties to contribute to both production and waste reduction
- It has been demonstrated that improved waste management reduces the incidents of trips and slip accidents due to better housekeeping standards

## Planet



- At current development resource demand we need 3 planets to sustain our development.



- This is obviously not an option so to address this we must use resources more carefully.
- AMEC Recycling/ re-use rate has increased by SCP from:  
2003 = 46% 2004 = 72% 2005 latest figures = 82%

## Benefits of EPIC



- Opportunity to learn from our supply chain
- Greater awareness of resource use and waste management
- Understanding the practical measures to improve resource use and minimise waste
- Gain cost saving opportunities
- Compliance with waste management legislation
- Recognition by Clients, AMEC, Sub-contractors

## Next stage



- Integrate learning into business management systems
  - Agenda 21
  - Design
  - Estimating
  - Procurement
  - Business development
  - CPI
  - Quality
  - SHE Forums

**What would a SCP do for you?**

## What would a SCP do for you?

- What are the barriers to resource efficiency in your supply chain?
- What business benefits would you expect from participating in a SCP?
- How do you think the benefits could be achieved and sustained?

## Envirowise Aims:

- To help businesses in the UK increase resource efficiency,
- To help reduce waste to landfill and the impact of the Landfill Tax Escalator on business,
- To help businesses to reduce the production of waste.

## Key Activities

- Development of guidance and case studies
- Awareness raising – events and information
- Specialist Advice

## Envirowise Services

- A range of FREE tailored telephone, website and face to face support –
- Ring us or apply on the web
- Building your current knowledge
- Helping you to embed improvements
- [www.envirowise.gov.uk/construction](http://www.envirowise.gov.uk/construction)
- Helpline number 0800 585794

## Site Visits

- When the time is right
- Specialist advice
- Confidential and impartial
- Adapted to meet needs/operations

Book a **free** &  
on-site survey  
save **£1,000s**



## Supply Chain Partnerships

- Developing methodology
- Assessment of current knowledge and practice
- Specification of guidance and training needs
- Provision of managing contractor
- Impact Assessment
- Sustainability
- New Campaigns

## How to become involved

- See me afterwards
- Contact the helpline 0800 585794
- Use the website
  - [www.envirowise.gov.uk/construction](http://www.envirowise.gov.uk/construction)

## Subscribe to the Construction E-News Bulletin

- For the latest developments on services for the sector + tips to save ££s
- Email Tara to be added to the mailing list -

[Tara.Clipperton@envirowise.gov.uk](mailto:Tara.Clipperton@envirowise.gov.uk)

